

Installing the Lockdown Browser

The Respondus Lockdown Browser is required to access the assessments. Follow the steps below to download and install the lockdown browser.

1. Download the Lockdown Browser
2. Install the Lockdown Browser
3. Test the Lockdown Browser

Step 1: Download the Lockdown Browser

[Download the Lockdown browser for Windows](#)

[Download the Lockdown Browser for Mac](#)

Step 2: Install the Lockdown Browser

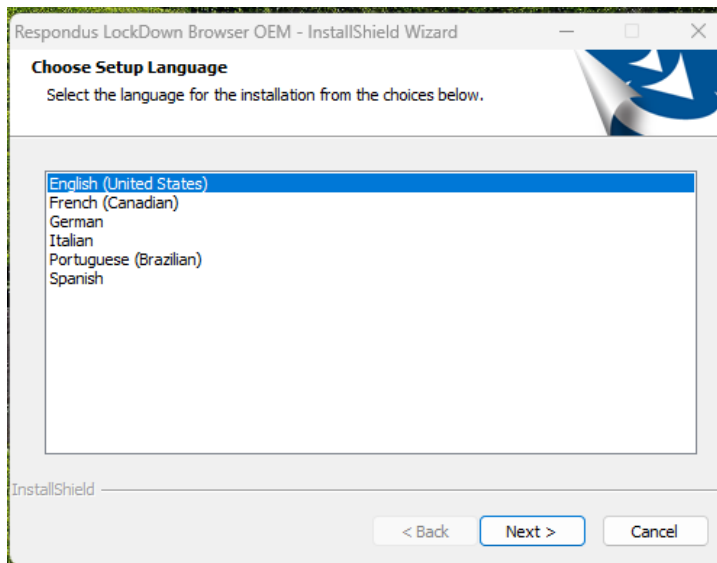
Installing the Lockdown Browser on Windows

System Requirements

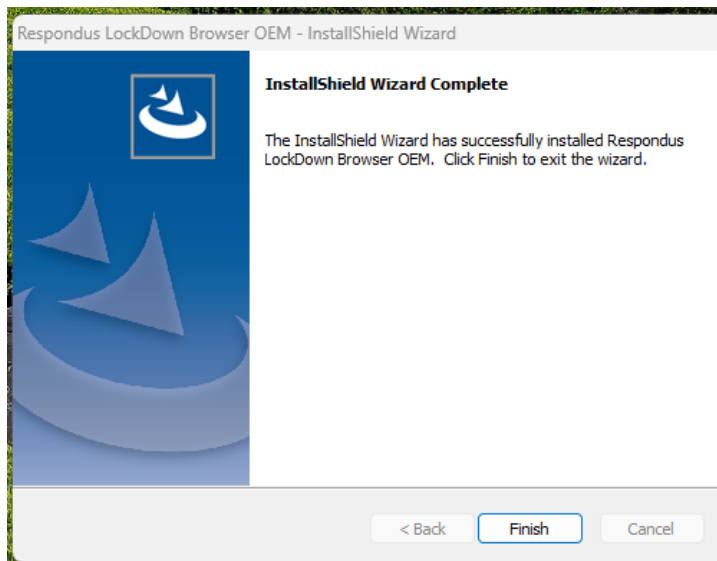
- Windows 11
- 4 GB RAM required, 8 GB RAM recommended
- 75 MB hard drive space

Installation Steps

1. Login to the computer as an administrator
2. Double-click the file LockDownBrowserOEMSetup.exe
3. When the wizard opens select the appropriate language and click **Next**.



4. Click **Finish** when the installation finishes.



5. Skip to Step 3: Testing the Lockdown Browser

Installing the Lockdown Browser on macOS

System Requirements

- Current version of macOS or up to two previous versions
- 4 GB RAM required, 8 GB RAM recommended
- 157 MB hard drive space

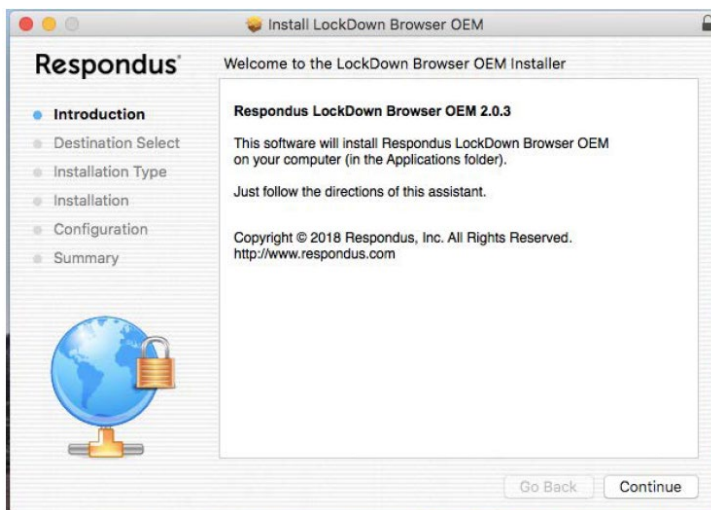
Installation Steps

1. Login to the computer as an administrator

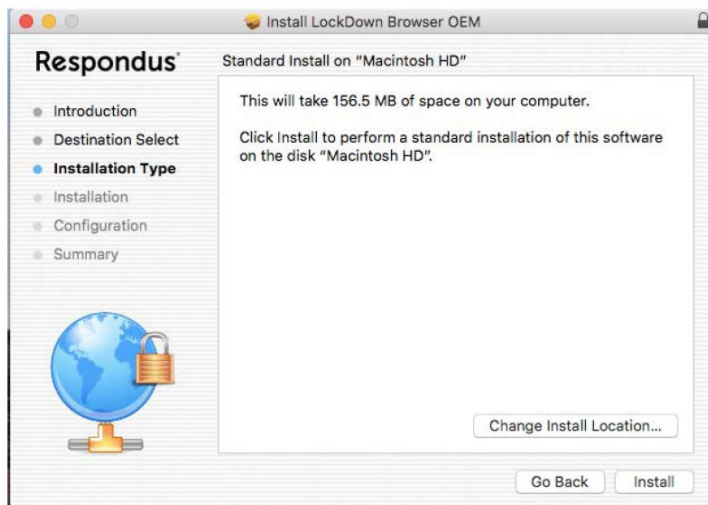
2. Unzip the “InstallLDBOEM.zip” file by double clicking the file. macOS will automatically extract the zip file, placing the contained files in the same folder as the zip file.
3. Double click the file “Install Respondus Lockdown Browser OEM (x64).pkg”
4. Click **Continue** if prompted



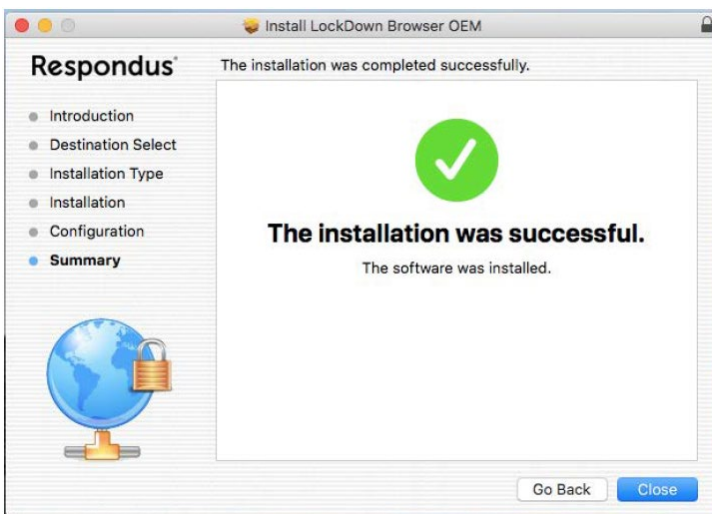
5. Click **Continue**



6. If you receive the prompt “how do you want to install this software” select “Install for all users of this computer” and click **Continue**.
7. Click **Install**



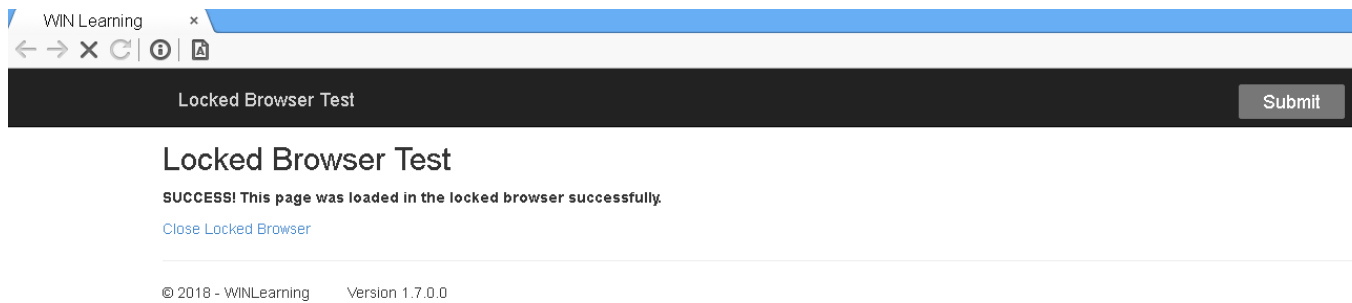
8. Click **Close** when the installation finishes



9. Continue to Step 3: Testing the Lockdown Browser

Step 3: Testing the Lockdown Browser

1. Open any browser on the computer (Chrome, Firefox, Edge, Safari)
2. [Click here to be taken to the Locked browser Test page](#)
3. Click "Open Locked Browser"
4. If you receive a message asking to open the page in LockDown Browser OEM or a similar message, click Yes or Allow
5. If the lockdown browser installed correctly, you will receive a message indicating "Success"



6. Click **Close Locked Browser** to close the lockdown browser