

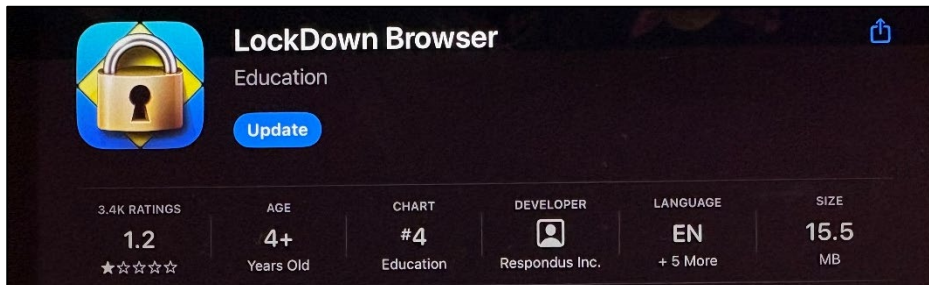
WIN Learning iPad Lockdown Browser

iPadOS Minimum Version: 15.0

Installing the WIN Learning iPad Lockdown Browser

The following instructions describe how to install the Respondus Lockdown Browser used by WIN Learning on iOS devices.

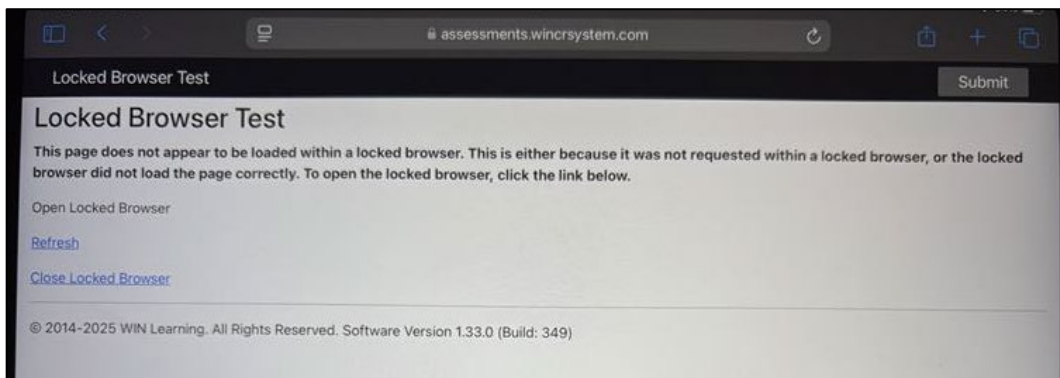
1. Open the App Store on the iOS device and search for Respondus Lockdown Browser.



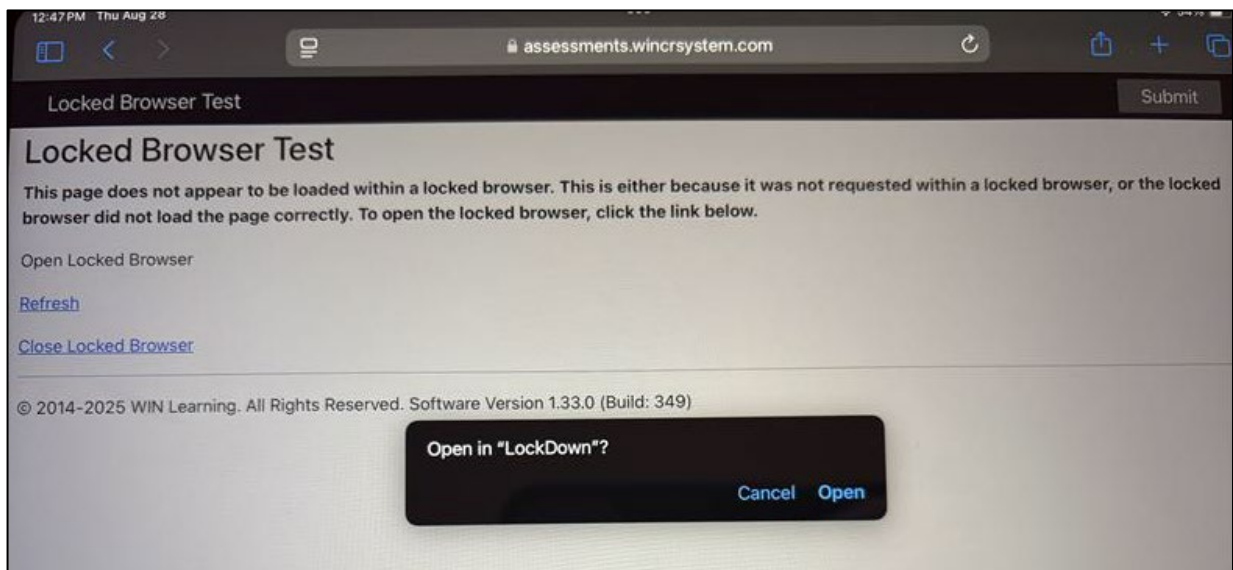
2. Click the "Get" button to download the Lockdown Browser.
3. Once the download and installation finishes, you should test the installation.

Testing the Installation

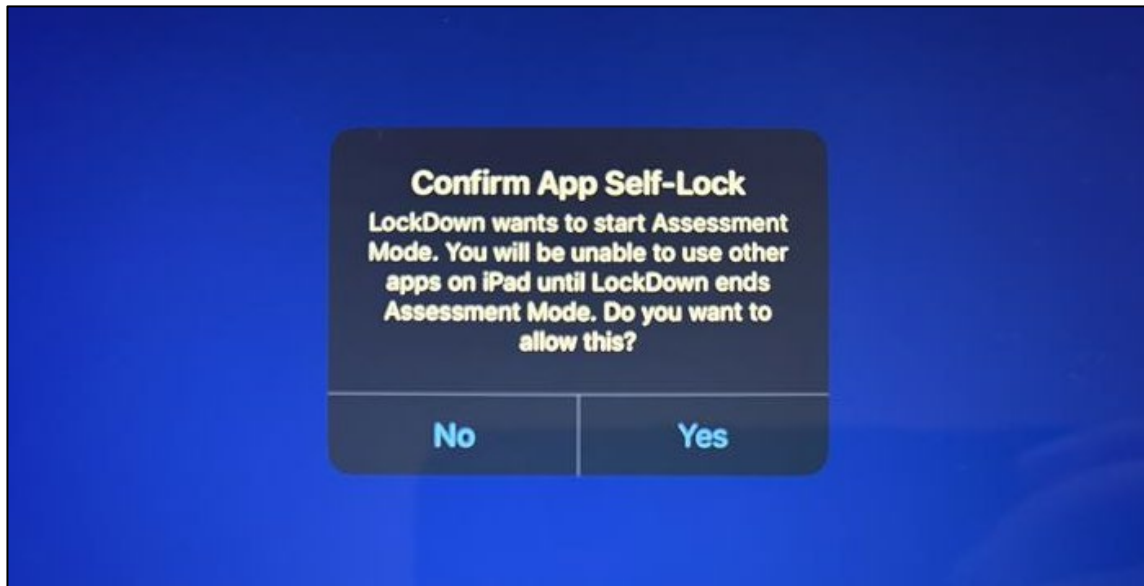
1. Open a browser on the iPad (Safari, Chrome, Firefox, etc.).
 - a. NOTE: DO NOT open the "Lockdown" app.



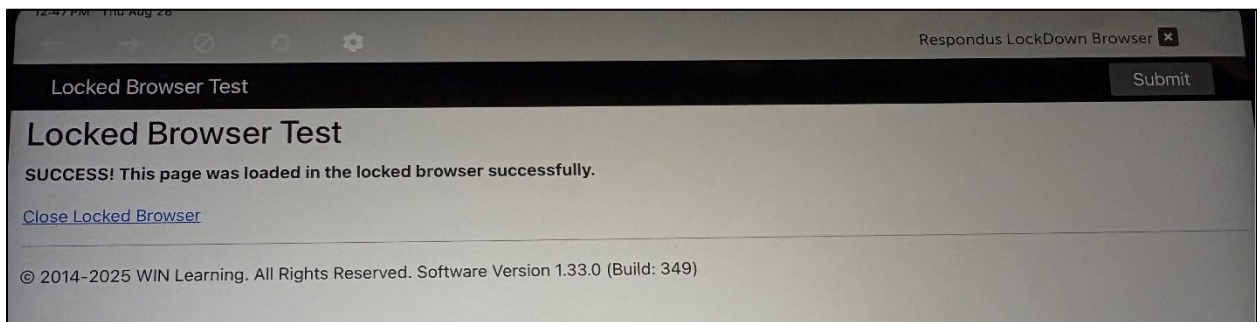
2. Navigate to assessments.wincrsystem.com/LockedBrowser/Test.
3. Click "Open Locked Browser."
4. Click "Open" in the "Open in LockDown" dialogue box.



5. Click "Yes" in the "Confirm App Self Lock" dialog box.



6. Observe the success message.



7. Click the "x" in the top right corner to close the lockdown browser.

The Student Experience – Taking an Assessment

The students should follow the steps below when taking an assessment:

1. Open a browser on the iPad (Safari, Chrome, Firefox, etc).
 - a. NOTE: the student should NOT open the “Lockdown” app.
2. Navigate to mi.wincrsystem.com and login.
3. Click the “Go” button on the tile that corresponds with the assessment they will be taking.
4. Click the “Assessment” button for the assigned assessment.
5. Click “Open” in the “Open in LockDown” dialogue box.
6. Click “Yes” in the “Confirm App Self Lock” dialog box.
7. A page with a button to start the assessment appears.

Once the student clicks the submit button they will be prompted to click “Finish.” After this they will be given the message that they can close the Lockdown Browser.